



## MD SERIES 6MD-8.0 (6V8.0AH)

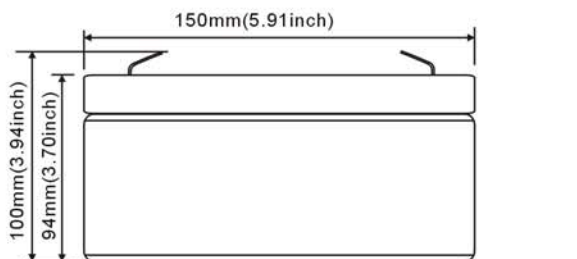
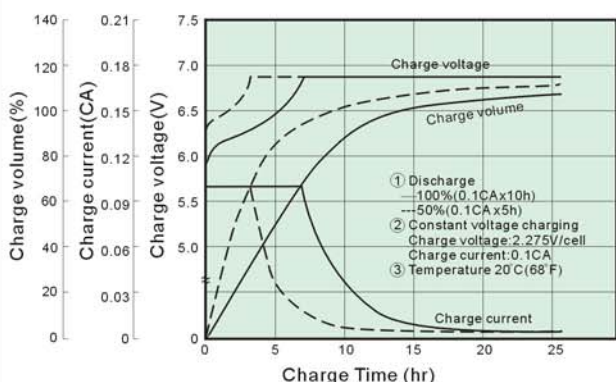
### FEATURES

- \*Maintenance Free
- \*Leak Proof/ Spill Proof
- \*Gas Recombination
- \*Absorbed Electrolyte
- \*Float/ Cycle Use
- \*Low Self Discharge Rate
- \*Safety Valve
- \*Lead Calcium Alloy
- \*Useable In Any Position
- \*Rugged Design
- \*Available Flame Retardant Material(Optional)

Nominal Voltage		
Rated Capacity (20 Hour Rate)		
Dimensions	Length	150mm (5.91inches)
	Width	50mm (1.97inches)
	Height	94mm (3.70inches)
	Total Height	100mm (3.94inches)
	Weight	1.80kg(3.96lbs)
Standard Terminals	ST1(FASTON TAB No.187)	

VRLA 6V8.0Ah - Specifications				
Nominal Voltage	Rated Capacity @20hr rate	Maximum Charge Rate	Maximum Discharge- Amps 5sec.	Internal Resistance
6V	8.0Ah	1.8Amps	110Amps	12Mili Ohms
Capacity@ 77 F(25 C)	8.00Ah @ 20 hour rate (400mA) to 1.75 volts per cell			
	7.30Ah @ 10 hour rate (730mA) to 1.75 volts per cell			
	6.50Ah @ 5 hour rate (1.30A) to 1.75 volts per cell			
	6.00Ah @ 3 hour rate (2.00A) to 1.75 volts per cell			
	5.25Ah @ 1 hour rate (5.25A) to 1.75 volts per cell			
Operating Temperature Range	Discharge	-4 F (-20°C) to + 140 F (60°C)		
	Charge	14 F (-10°C) to + 122 F (50°C).(with temperature compensation)		
Recommended Operating Temperature Range	+68 F (20°C)to + 77 F (25°C)			
Charging (Constant Voltage)	Cycle use	Initial Current 2.4Amps (recommended).		
	Float use	Voltage 7.25-7.45Volts @77 F (25°C) Voltage 6.80-6.90Volts @77 F (25°C)		
Self Discharge @ 77 F (25°C)	Capacity after 3 month storage	90%		
	Capacity after 6 month storage	80%		
	Capacity after 12 month storage	60%		
CCB Battery may be stored for up to 12 months at 77 F(25°C) and then a freshing charge is required. For higher temperatures the time interval will be shorter.				
Capacity affected by Temperature (20 hour rate)	104 F (40°C)	102%		
	77 F (25°C)	100%		
	32 F (0°C)	85%		
	58 F (-15°C)	65%		
Charge Method (Constant Voltage)	Cycle use (Repeating use)	Initial current	1.5 A or smaller	
		Control voltage	7.25V to 7.45V	
	Trickle use	Initial current	0.8 A or smaller	
		Control voltage	6.80V to 6.90V	

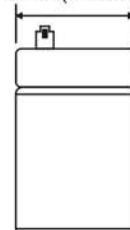
**BATTERY CHARGING CHARACTERISTICS**  
(Typical example of charge characteristic for the standby use)



**OUTER DIMENSIONS**



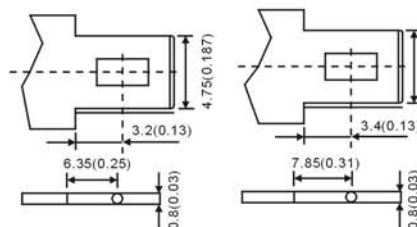
50mm (1.97 inch)



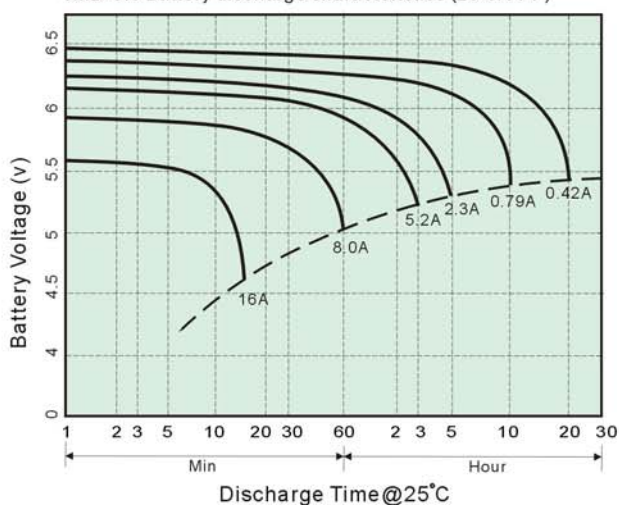
**TERMINAL TYPE** mm (inch)

• Terminal T1

• Terminal T2



**6MD-8.0 Battery discharge characteristics (25°C/77°F)**

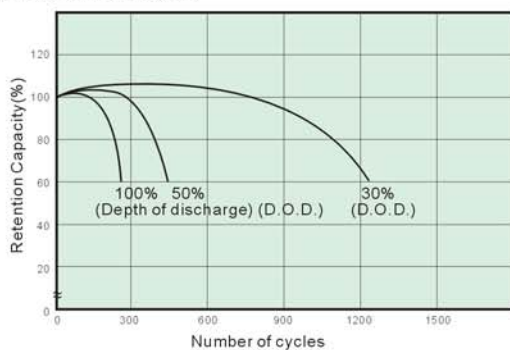


**Constant power discharge characteristics at 25°C/77°F**

End V/cell	Discharge time							
	5Min	10Min	15Min	30Min	1Hr	3Hr	5Hr	10Hr
1.75V	51.6	35	26.5	14.5	8.1	4.5	2.8	1.6
1.70V	54.5	35.8	27.1	15	8.2	4.8	2.93	1.63
1.60V	56.3	36.2	27.5	15.3	8.4	4.9	3.06	1.71

**Battery Life Characteristics of Cyclic Use**

Testing Conditions: Discharge Current: 0.25C Amp (F.V. 1.7V/cell)  
Charging Current: 0.1C Amp  
Charging Volume: 120% OF Discharge Capacity  
Ambient Temperature: 20°C (68°F)



**Charging Procedure**

Application	Charging method	Charging Voltage at 20°C (V/cell)	Temperature compensation coefficient of charging voltage (mV/Ccell)	Max. charging current (CA)	Charging time 0.1CA, 20°C (h)		Temp (°C)
					100% discharge	50% discharge	
For standby power Source	Constant voltage & Constant current charging (with current restriction)	2.25~2.30	-3	0.2	24	20	0~40 (32~104 F)
For cycle service		2.40~2.0	-4	0.2	16	10	

**CCB INDUSTRIAL BATTERY CO., LTD**

CCB CHINA

Shenzhen, China 518001  
Tel: 86-755-82297502 82297504  
Fax: 86-755-82297586  
E-mail: sales@battery-oem.com  
WEBSITE:  
http://www.battery-oem.com

CCB USA

Phoenix Arizona 85054 USA  
Tel: 1-480-513-0808  
Fax: 1-480-563-9264  
E-mail: ccbbatteries@att.net  
WEBSITE:  
http://www.ccbbattery.com

